



# User Guide 1.0

## Claremont Centre

### Reception Seating

# Claremont Centre. Reception Seating

Content Creation Sheet

Date: 19.10.15

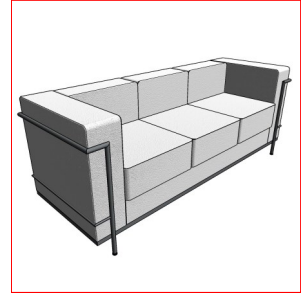
Revision: 1.0

## Contents

---

| Page Number | Data Sheet       |
|-------------|------------------|
| 0           | Predefined Types |
| 1           | Sofa             |
| 2           | Waiting Bench    |
| 3           | Coffee Table     |
| 4-6         | User Guide       |

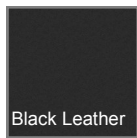
# Reception Seating. Sofa



## Predefined Types

| Family Type        | Width | Depth | Height |
|--------------------|-------|-------|--------|
| Single Seater Sofa | 800   | 620   | 700    |
| 2 Seater Sofa      | 1300  | 620   | 700    |
| 3 Seater Sofa      | 1800  | 620   | 700    |

## Material Options




# Reception Seating. Waiting Bench




Predefined Types

| Family Type   | Width | Depth | Height |
|---------------|-------|-------|--------|
| Waiting Bench | 1600  | 375   | 550    |

Material Options



White Leather



Black Leather


# Reception Seating. Coffee Table




Predefined Types

| Family Type              | Width | Depth | Height |
|--------------------------|-------|-------|--------|
| Square Coffee Table      | 675   | 675   | 475    |
| Rectangular Coffee Table | 1200  | 675   | 475    |

Material Options

White Leather

Black Leather

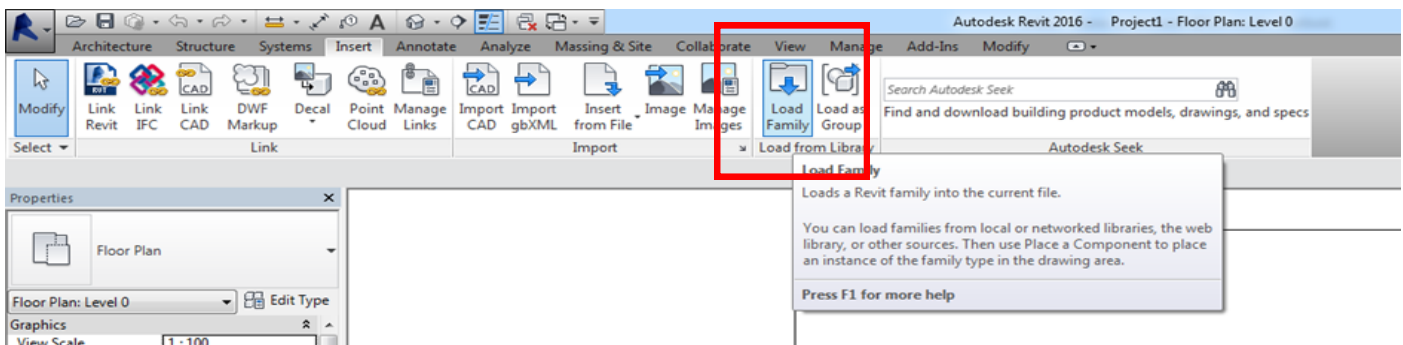
# Reception Seating. Your Revit Guide

*A simple guide to using Claremont Centre Revit Ready files.*

## 1. LOAD IT

The Reception Seating range consists of 3 Revit Families, each of these have predefined types as outlined above in the predefined types and also the manufactures brochure.

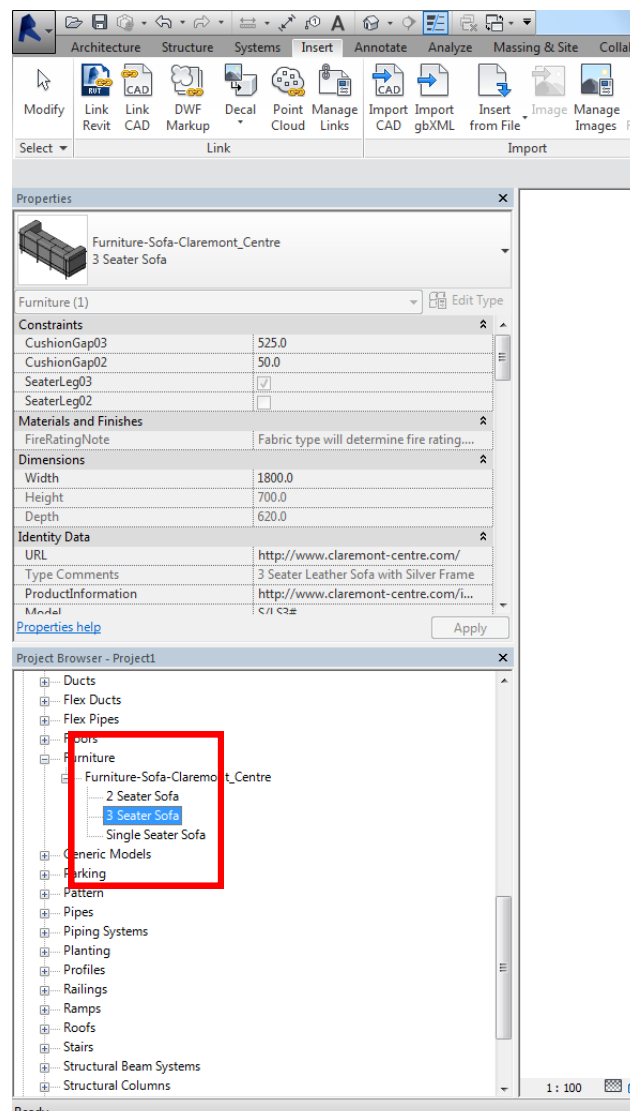
After downloading and saving the file to a suitable location go to 'Insert Tab/Load Family...'



# Reception Seating. Your Revit

## 2. USE IT

Once your family is loaded in, it will be located in the 'Project Browser/Families/Furniture' tab. Types are named in a way to ensure ease of selection. Click and drag your chosen item into your floor plan.



# Reception Seating. Your Revit

## 3. CUSTOMISE IT

Once an item is selected in will turn blue, the properties panel will then display the parameters available. Here you will be able to make changes to the finishes. All material options will load in with the family, click the 'materials and finishes' parameter to view.

Please note- The fabric type will determine the fire rating. Please complete 'FireRating' Parameter once selection has been made.

