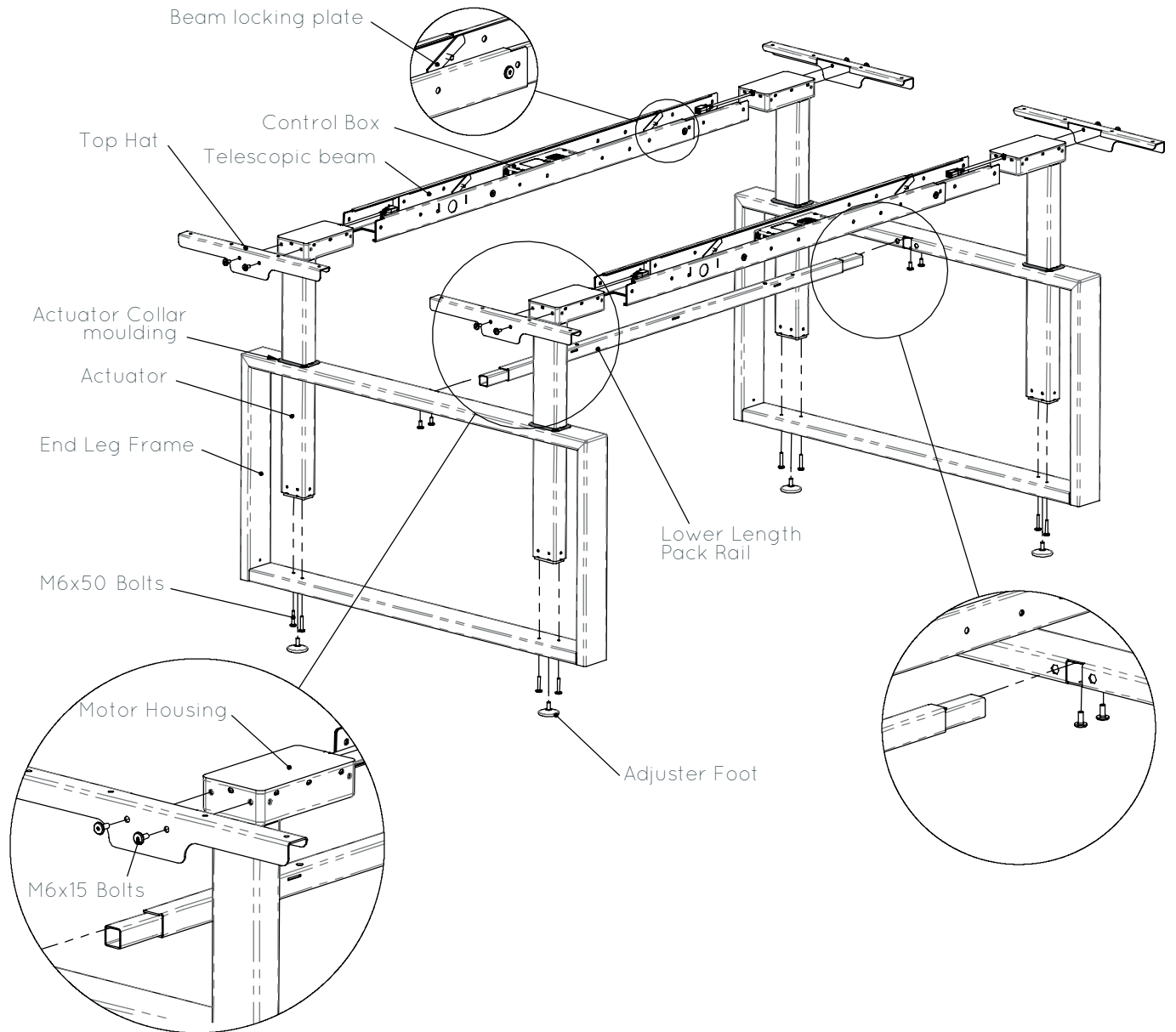


Dual Sit & Stand assembly instructions 1 installer 20 minutes



- Slide the actuators through the collar mouldings (**note orientation**) and down to the bottom rail. Secure underneath with 2 **M6x50** bolts per actuator.
- Insert adjuster foot (4No).
- Slot the telescopic beams over the motor housing on one of the end leg frames and secure with **M6x15** bolts.
- Slot the lower length pack rail into square cut out on the same end leg frame and secure with **M6x15** bolts.
- Ensure the control boxes are inside the beams before offering up the other end leg frame. Slot into the other end of the telescopic beams and lower length pack. Secure with **M6x15** bolts.
- Fix top hats to the end of the motor housings with **M6x15** bolts.
- Lock off the telescopic beams with beam locking plates and **M6x15** bolts through holes in the side walls.
- Connect the actuators to the control box with motor cables, and plug in the control switch.
- Plug in the power cable and power up.
- Place the desktop onto the frame and secure with choice of bolts or screws supplied.
- Click the control switch bracket into the switch and secure to the underside of the desktop in the desired location.
- On first start up, it is necessary to calibrate the actuators by holding the down button on the control switch for five seconds after the frame reaches the bottom of its stroke.

